



## Environmental and oil cabinets

### The optimum storage area for liquids

Lista environmental cabinets are suitable for the safe and standard storage of water-hazardous substances in water hazard class (WGK) 1-3. The galvanised drip trays are height-adjustable in 25 mm increments to ensure optimum height division. Liquids that are required in the daily work flow are stored safely in Lista oil cabinets. Pull-out shelves hold the liquid canisters. Drops of liquid are collected in the drip tray. Drawers can also be installed depending on the application.



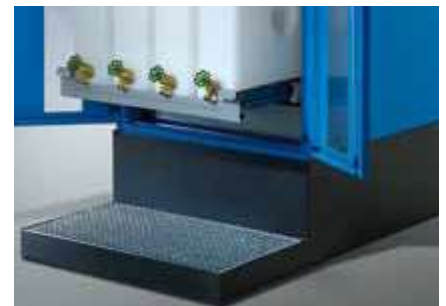
#### Drip trays

The drip trays feature a leak-proof welded construction according to StawaR (German directive on steel trays) and have a test certificate.



#### Canister shelf

The canister shelf has a handle on the left and right and a centre lip. It is only 27 E (451 mm) deep so there is enough room in the front area for the canister tap.



#### Built-under drainage tray for oil cabinet

The built-under drainage tray of the oil cabinet has a leak-proof welded construction according to the Water Resources Act Sec. 19/StawaR (German directive on steel trays) and has a test certificate. It has a volumetric capacity of 40 l.

## i Benefits

- Natural ventilation through perforated areas
- Direct access to all stored items
- Individual tray and drawer fitting and adjustment options
- High-quality, welded sheet steel construction
- Key Lock locking system
- 12 standard colours without a surcharge and 12 optional colours (see page 29)

Lista environmental and oil cabinets provide safe and sturdy storage space for our chemicals.



Cabinet systems

**10**  
Years  
Guarantee



**Colours**

Cabinets available in 12 standard colours and 12 additional colours (with surcharge). When placing your order, please enter the desired three-digit colour code (instead of XXX). Customised colours on request.

For colour information see fold-out



# Environmental cabinets

## Preconfigured environmental cabinets with solid sheet doors

**D**  **500 mm**



Art. no. **60.474.030**  
Reseda green, RAL 6011

### **i** Features

#### Environmental and oil cabinets:

- Solid sheet doors, flush-fitting, folded from one piece
- Doors are flush with the cabinet housing, opening angle approx. 115°
- Maximum load capacity: housing 500 kg, trays 100 kg (for environmental cabinets), canister shelves 200 kg (for oil cabinets)
- Key Lock as clasp lock (separately lockable); for further locking options see individual configuration
- Durable powder coating

### **i** Design diversity

#### Environmental cabinets:

- Housing heights: 1000, 1950 mm;  
housing width: 1000 mm;  
housing depth: 500 mm.
- Cabinet accessories: drip trays, fastening set, screw connections/ floor anchoring

#### Oil cabinets:

- Housing height: 1450 mm;  
housing width: 717 mm;  
housing depth: 753 mm.
- Cabinet accessories: canister shelf, built-under drainage tray, drip tray, canisters, screw connections/ floor anchoring

**H**  **1950 mm**



4 trays  
20 l  
20 l  
20 l  
20 l

**H**  **1000 mm**



2 trays  
20 l  
20 l

#### Cabinet with 2 solid sheet doors

<b>W</b>  mm			Hinge pins mounted	Art. no. 
1000	100	Key Lock	Hinge	<b>60.473.XXX</b>

#### Cabinet with 2 solid sheet doors

<b>W</b>  mm			Hinge pins mounted	Art. no. 
1000	100	Key Lock	Hinge	<b>60.474.XXX</b>

# Cabinet housing, hinged doors, accessories

## With Key Lock



**W** → 1000 mm



### Housing for environmental cabinets

The environmental cabinet housings are made of high-quality, welded sheet steel. Attachment strips with 25 : 25 mm divisions allow optional installation of drip trays. The cabinet housing is prepared for lateral screw connection and for floor anchoring.

### Hinged doors for environmental cabinets

The hinged doors are flush-fitting, multiply folded and equipped with perforated areas for natural ventilation. The doors are flush with the cabinet housing. The opening angle is approx. 115°. The double leaf doors have a recess for Key Lock.



For colour information see fold-out

H ↑	Housing for environmental cabinets mm	1000	1950
	Clear height mm	885	1835
D ↗	mm	Art. no.	Art. no.
	500	57.613.XXX	57.619.XXX

### Hinged door set for Key Lock

2 doors <b>excluding</b> clasp lock <b>Separately lockable</b>		62.023.XXX	62.024.XXX
● Clasp lock (random number)		49.060.000	49.060.000
2 doors <b>excluding</b> clasp lock <b>Simultaneously lockable</b>		62.023.XXX	62.024.XXX
+ Clasp lock 2C_____ (number according to choice)		49.067.000	49.067.000
For off-the-shelf clasp locks with pre-defined number see page 523			
2 doors <b>excluding</b> clasp lock <b>Master key system</b>		62.023.XXX	62.024.XXX
+ Clasp lock for master key system		49.068.000	49.068.000
● Master key (registered system)		20.040.000	20.040.000

+ Please state the existing cylinder number for repeat orders

● Required for operation

### Colours

Housings and doors available in 12 standard colours and 12 additional colours (with surcharge). When placing your order, please enter the desired three-digit colour code (instead of XXX). Customised colours on request.



Locking systems see page 24

### Drip tray with fastening set

Welded liquid-tight. Designed according to Water Resources Act Sec. 19/StawaR (German directive on steel trays). The drip tray has a corresponding type plate as well as a test certificate. Including fastening set and shelf supports. Specification: sheet steel, galvanised surface. Material thickness: 3 mm.

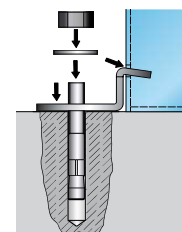
For cabinet width mm	For cabinet depth mm	Tray dimensions (W x D x H) mm	Tray volume Litres	Art. no.
1000	500	982 x 445 x 70	20	60.475.000



### Screw connections / floor anchoring

The cabinet housings are prepared for lateral screw connection and for floor anchoring.

Specification	Art. no.
Anti-tilting device for environmental cabinet (floor anchoring)	90.177.000



## Preconfigured oil cabinets with solid sheet doors

**D** ↗ 753 mm

**H** ↑ 1450 mm



2 canister shelves  
8 canisters  
25 l each  
1 drip tray

**Cabinet with 2 solid sheet doors**

W → mm	kg	Lock	Hinge pins mounted	Art. no. 
717	200	Key Lock	Pintle	71.460.XXX



3 canister shelves  
10 canisters  
10 l each  
4 canisters  
25 l each  
1 drip tray

**Cabinet with 2 solid sheet doors**

W → mm	kg	Lock	Hinge pins mounted	Art. no. 
717	200	Key Lock	Pintle	71.461.XXX



Art. no. **71.461.010**  
Light blue, RAL 5012



1 drawer  
100 mm  
2 canister shelves  
5 canisters  
10 l each  
4 canisters  
25 l each  
1 drip tray

**Cabinet with 2 solid sheet doors**

W → mm	kg	Lock	Hinge pins mounted	Art. no. 
717	200	Key Lock	Pintle	71.462.XXX

### **i** Tip



#### **Observe legal regulations and directives**

The canisters may only be filled with acid- and lye-free liquids, oils and grease with a flame point above 55° Celsius. Maximum ambient temperature 40° Celsius. Please call us for special applications and further information.

# Cabinet housing and hinged doors with Key Lock or Code Lock

**W → 717 mm**



## Housing for oil cabinets

The oil cabinets are made of high-quality welded sheet steel and equipped with a single-drawer blocking system and transport securing device. Vertical supports with 25 : 25 mm divisions allow optional installation of drawers and canister shelves. The cabinet housing is prepared for lateral screw connection and for floor anchoring.

## Hinged doors for oil cabinets

The sheet steel hinged doors installed on the front are equipped with a 2-point lock and with a recess for Key Lock on the double leaf. The maximum opening angle is 235°.



Housing for 2 hinged doors



<b>H ↑</b> Housing for oil cabinets mm		<b>1450</b>
Clear height mm		1350
<b>D ↗</b> mm	Specification	Art. no.
<b>753</b>		<b>71.450.XXX</b>

Hinged door set for Key Lock		
2 doors <b>excluding</b> clasp lock		Solid sheet <b>12.615.XXX</b>
<b>Separately lockable</b>		Viewing window <b>71.452.XXX</b>
● Clasp lock (random number)		<b>49.060.000</b>
2 doors <b>excluding</b> clasp lock		Solid sheet <b>12.615.XXX</b>
<b>Simultaneously lockable</b>		Viewing window <b>71.452.XXX</b>
+ Clasp lock 2C_____ (number according to choice)		<b>49.067.000</b>
For off-the-shelf clasp locks with pre-defined numbers, see below*		
2 doors <b>excluding</b> clasp lock		Solid sheet <b>12.615.XXX</b>
<b>Master key system</b>		Viewing window <b>71.452.XXX</b>
+ Clasp lock for master key system		<b>49.068.000</b>
● Master key (registered system)		<b>20.040.000</b>

Hinged door set for Code Lock		
2 doors <b>excluding</b> clasp lock		Solid sheet <b>12.615.XXX</b>
		Viewing window <b>71.452.XXX</b>
● Electronic locking per number code		<b>49.070.000</b>

+ Please state the existing cylinder number for repeat orders ● Required for operation

## \* Clasp lock 2C with pre-defined number

In stock	Art. no.
Clasp lock 2C 1	<b>49.061.000</b>
Clasp lock 2C 2	<b>49.062.000</b>
Clasp lock 2C 3	<b>49.063.000</b>
Clasp lock 2C 4	<b>49.064.000</b>
Clasp lock 2C 5	<b>49.065.000</b>
Clasp lock 2C 6	<b>49.066.000</b>

## Colours

Housings and doors available in 12 standard colours and 12 additional colours (with surcharge). When placing your order, please enter the desired three-digit colour code (instead of XXX). Customised colours on request.



For colour information see fold-out

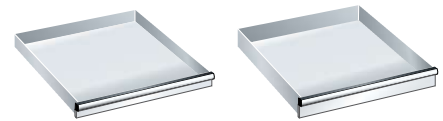
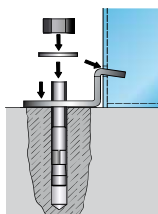
## Cabinet accessories for oil cabinets

### Drawer, canister shelf, built-under/drainage tray, canister



#### Drawers

The drawers have a full extension runner and are available with a drawer load capacity of 75 kg or 200 kg. Optionally it is possible to choose between a standard specification without a drawer safety device or with a safety catch on the right.



H ↑	mm	50	75
Usable height mm		32,5	57,5
Side/back height mm		28,5	49
Load capacity <b>75</b>	Art. no.		Art. no.
Standard		72.057.XXX	72.058.XXX
Safetycatch on the right		72.167.XXX	72.168.XXX
Load capacity <b>200</b>	Art. no.		Art. no.
Standard		-	72.059.XXX
Safety catch on the right		-	72.169.XXX

#### Canister shelf

To hold the canisters. With full extension. Specification: sheet steel. Colour: grey, NCS S 4502-R.

Installation height mm	Usable width mm	Usable depth mm		Art. no.
100	612	459	200	71.465.000

#### Built-under drainage tray

As drip tray with galvanised grating (30 x 30 mm) in the front area. Oil- and water-tight welded construction according to Water Resources Act Sec. 19/StawaR (German directive on steel trays) (with corresponding type plate and test certificate). Specification: sheet steel St 37-2, galvanised grating. Colour: substructure anthracite, RAL 7016.

Width mm	Depth mm	Height mm	Volumetric capacity in litres	Art. no.
720	752 + 400	302/81	40	14.995.000

#### Drip tray

Drip tray with a pair of support brackets, specification: sheet steel, galvanised surface. Material thickness: 3 mm. Welded liquid-tight according to Water Resources Act Sec.19/StawaR (German directive on steel trays) (with corresponding type plate as well as test certificate).

Width mm	Depth mm	Height mm	Volumetric capacity in litres	Art. no.
651	620	100	40	71.466.000

#### Screw connections/floor anchoring

The cabinet housings are prepared for lateral screw connection and for floor anchoring.

Specification	Art. no.
Anti-tilting device for oil cabinet (floor anchoring)	12.042.000



	<b>100</b>	<b>125</b>	<b>150</b>	<b>200</b>	<b>250</b>	<b>300</b>
	82,5	107,5	132,5	182,5	232,5	282,5
	76	76	126	176	226	276
Art. no.						
<b>72.060.XXX</b>	<b>72.062.XXX</b>	<b>72.064.XXX</b>	<b>72.066.XXX</b>	<b>72.068.XXX</b>	<b>72.070.XXX</b>	
<b>72.170.XXX</b>	<b>72.172.XXX</b>	<b>72.174.XXX</b>	<b>72.176.XXX</b>	<b>72.178.XXX</b>	<b>72.180.XXX</b>	
Art. no.						
<b>72.061.XXX</b>	<b>72.063.XXX</b>	<b>72.065.XXX</b>	<b>72.067.XXX</b>	<b>72.069.XXX</b>	<b>72.071.XXX</b>	
<b>72.171.XXX</b>	<b>72.173.XXX</b>	<b>72.175.XXX</b>	<b>72.177.XXX</b>	<b>72.179.XXX</b>	<b>72.181.XXX</b>	

**Canister with brass outlet tap**

Equipped with screw cap. Filter in the filler neck. Brass outlet tap with gasket. Specification: NDPE plastic, transparent. Canister guarantee period: 2 years.

Width mm	Depth mm	Height mm	Volumetric capacity in litres	Art. no.
120	440	270	10	<b>14.988.000</b>
150	440	490	25	<b>14.989.000</b>



**Canister with NDPE outlet tap**

Equipped with screw cap. Filter in the filler neck. NDPE outlet tap with gasket. Specification: NDPE plastic, transparent. Canister guarantee period: 2 years.

Width mm	Depth mm	Height mm	Volumetric capacity in litres	Art. no.
120	440	270	10	<b>14.996.000</b>
150	440	490	25	<b>14.997.000</b>



Cabinet systems

**@ Lista online**

The entire Lista range offers countless solutions to meet your specific requirements. The Online Compendium 2, the Lista Configurator and the Lista Script can be found here:

**www.lista.com**



For partition material see page 706 ff